

# Product Environmental Report

## ViewFinity S60UD

05/29/2024



At Samsung, we work to integrate eco-conscious technology and innovation in our products. By considering sustainability at every step of the product life cycle, we aim to empower our customers to join us in our journey to build a better tomorrow together.



[1]



[2]



[3]



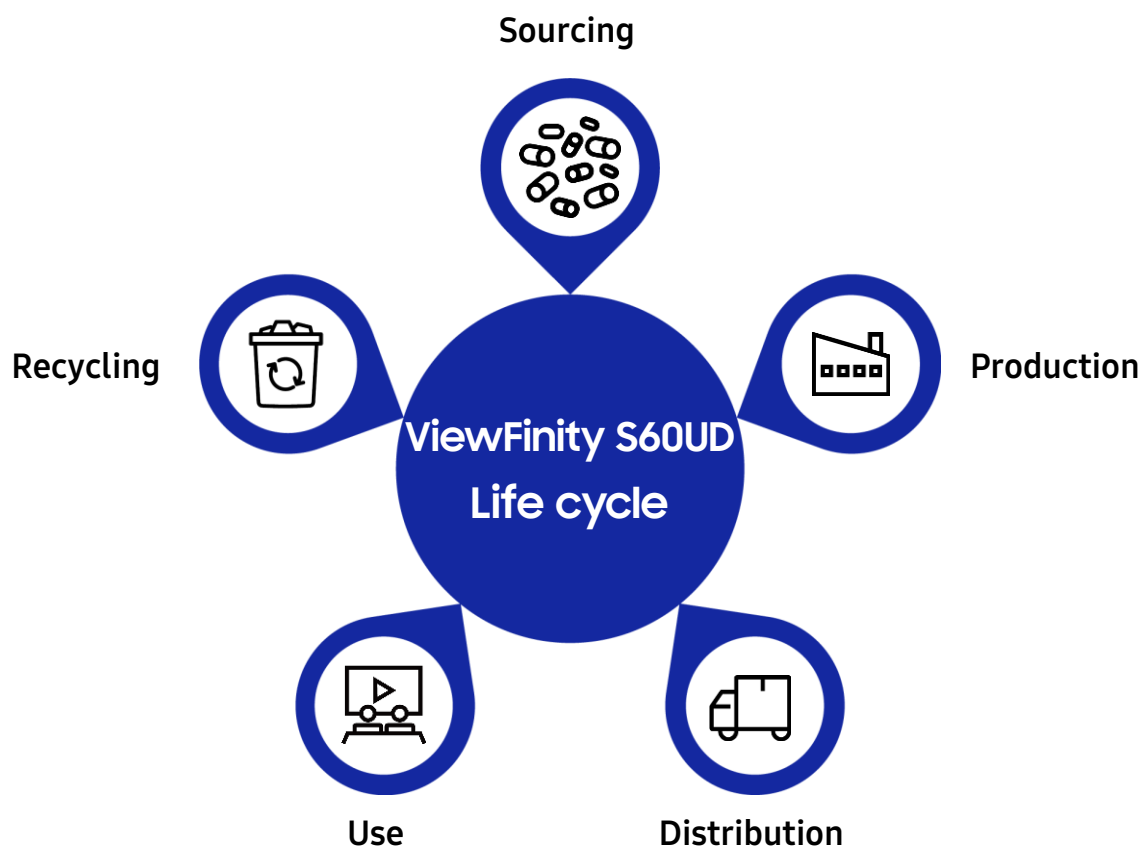
[4]

\* Certification acquisition model<sup>[1] [2] [3] [4]</sup> : \*\*24D60\*U\*\*\*\*\* / \*\*27D60\*U\*\*\*\*\*/ \*\*32D60\*U\*\*\*\*\*

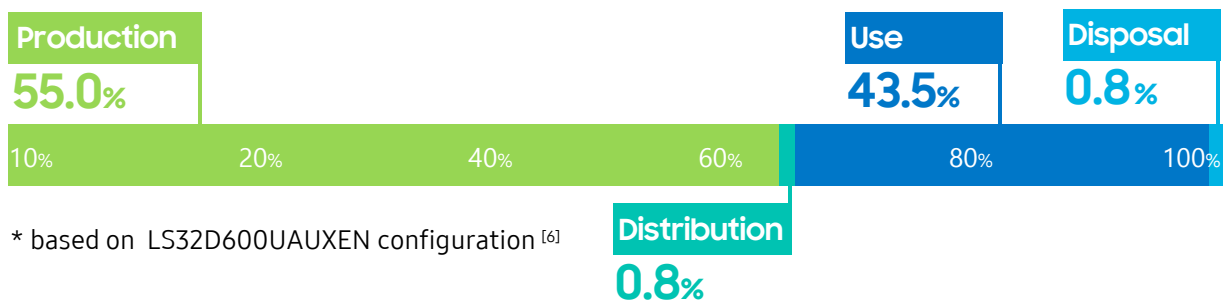
# Product Carbon Footprint

At Samsung Electronics, we assess a product's entire life cycle, including the sourcing, production, distribution, product use, and recycling phases, to understand the environmental impacts of our products.

At the production stage, we are aiming to expand the development and application of recycled materials with a lower carbon footprint. At the distribution stage, we are working to minimize packaging volume and weight to reduce carbon emissions. Through improving product energy efficiency, we are trying to improve the environmental impact at the use stage.

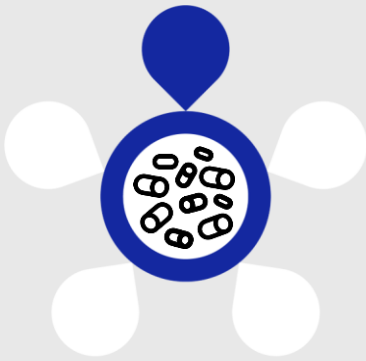


**ViewFinity S32D60\*U Life Cycle carbon emissions : 316 kg CO<sub>2</sub>eq. <sup>[5]</sup>**



※ The figure above calculates the environmental impact of one product over the entire life cycle as CO<sub>2</sub> emissions. <sup>[6]</sup>

# Sourcing



Samsung Electronics is committed to improving resource circulation throughout the life cycle of electronic products, from raw materials to disposal and recycling.

To build toward a circular system, we are endeavoring to use recycled materials and collecting e-waste to extract materials for reuse. By 2030, we aim for 50% of the plastic used in our DX products to incorporate recycled resin. By 2050, we will see this figure increase to 100%.

Samsung Electronics uses the recycled materials for parts in the ViewFinity S60UD products. In addition, we are trying to manage its supply chain so that minerals used in its products are mined in accordance with OECD due diligence guidelines.

## Plastic



S60UD's rear cover contains a minimum of 10% recycled content, consisting of 5% post consumer recycled polycarbonate (PC) and 5% ocean-bound polyethylene terephthalate(PET).

Stand contains a minimum of 35% ABS post consumer recycled material.<sup>[7]</sup>

## Responsible minerals



For internationally disputed minerals such as tantalum, tin, tungsten, and gold, we elect to only use minerals supplied by smelters that have obtained global third-party certifications. Minerals that raise human rights violations or environmental destruction issues during mining are included in the management<sup>[8]</sup> list and are avoided in our management of the mineral supply chain.



Chemical Mgmt.

To prevent hazardous substances from entering our products, we rigorously inspect manufactured parts and raw materials through our chemical management system.

Our standards for the "Standards for Control of Substances Used in Products"<sup>[9]</sup> are based on global regulations and standards. We voluntarily established reduction plans for the use of potentially hazardous substances as well as legally regulated substances.

# Production



We are expanding the use of renewable energy at our business most sites around the world.

Energy infrastructure and regulations vary widely by jurisdiction and require region-specific transition plans.



Renewable Energy

We plan to run all operations of the DX division on renewable energy by 2027.<sup>[10]</sup>



On-site Waste

We are constantly trying to reduce waste and expand recycling. Company-wide, we plan to obtain a platinum-level Zero Waste to Landfill certification, issued by safety certification organization Underwriters Laboratories (UL), for all global operations by 2025.

Most sites that produce Samsung Electronics TV, audio, and display products have been certified for environmental management (ISO14001) and energy management (ISO50001).<sup>[10]</sup>



Reducing material & Scrap recycling

Samsung Electronics is increasing the efficiency of using raw materials to reduce environmental impact during the production stage. We are using External Gas Molding (EGM) technology, which uses air instead of plastic to shape parts, thus reducing the amount of plastic used in the injection process.





# Distribution

To reduce the environmental impact of our product packaging, we are replacing plastic packaging and vinyl wraps with paper and recycled materials.

We are also reducing the volume and weight of packaging to mitigate greenhouse gas emissions in the transportation and shipping process.



Upcycle  
Packaging

Recycled packaging materials are applied to accessory bags and stand bags, which are subsidiary materials for product packaging. <sup>[12]</sup>

Plastic  
band  
removal

**100%**

The plastic band that binds the accessory cable has been changed to a paper band.

Metal staple  
removal

**100%**

The recycling of the paper box was enhanced by removing the metal staples used in the side joints of the box. <sup>[13]</sup>



# Use



Environmental experts support product development at Samsung Electronics so we can empower our customers to use our products more sustainably. During the product development phase, our stress tests help ensure the longevity and consistent performance of our products.



Energy  
Efficiency

To reduce greenhouse gas emissions during the use of our key products, we set our plan to reduce power consumption by an avg. of 30% by 2030, compared to products with the same specifications in 2019. <sup>[14]</sup>

\* Power consumption of S32D60\*U <sup>[15]</sup>



Repair &  
Reuse

For the parts of TV and display products that have been replaced by modules, we are changing the design so that they can be separately repaired. <sup>[16]</sup>





# Recycling



To promote the circular economy and a low-carbon society, we are expanding responsible recycling in more than 50 countries around the world.

Samsung's local recycling programs provide collection services tailored to each region for customers disposing e-waste, and we take back electrical and electronic waste regardless of product brand.



Repair & Reuse

We are trying to reuse parts to reduce waste even in the repair process of TV and display products. In 2022, about 550,000 parts were recovered from 36 countries, and 230,000 of them have been reused after quality verification.



Upcycle Packaging

Upcycle packaging is designed to allow consumers to upcycle the box that is usually discarded after transporting the product. By removing promotional stickers that were attached to the box surface and reducing ink usage, packaging recyclability was increased, and we are striving to reduce the impact on the environment.

Customers can make their own props such as magazine stands and pet products using dot patterns printed on the surface of the packaging box. We are diversifying props designed through campaigns and contests and releasing drawings of props. <sup>[17]</sup>



# Endnotes

## Disclaimer

1. Germany's TUV Rheinland has certified that Samsung Electronics has correctly measured carbon footprints by applying the "ISO 14067:2018" standard. In particular, 'Product Carbon Reduction' certification can be obtained when carbon generation is reduced compared to existing equivalent models.

Certification acquisition model: \*\*24D60\*U\*\*\*\*\* / \*\*27D60\*U\*\*\*\*\*/ \*\*32D60\*U\*\*\*\*\*

※ In model name notation, ' \* ' consists of numbers (0 to 9) or alphabets (A to Z).

2. Energy star is a program in which the Environmental Protection Agency (EPA) of the United States certifies that it is an energy-efficient product among various electrical and electronic products.

Certification acquisition model: \*\*24D60\*U\*\*\*\*\* / \*\*27D60\*U\*\*\*\*\*/ \*\*32D60\*U\*\*\*\*\*

※ In model name notation, ' \* ' consists of numbers (0 to 9) or alphabets (A to Z).

3. EPEAT (Electronic Product Environmental Assessment Tool) is an eco-friendly certification system for electronic products in the United States and is certified in three grades: Gold, Silver, and Bronze by evaluating various items such as prohibition of the use of harmful substances, energy efficiency of products, ease of decomposition and recycling of products and packaging materials, and corporate social responsibility.

Certification acquisition grade: EPEAT (Silver)

Certification acquisition model: \*\*24D60\*U\*\*\*\*\* / \*\*27D60\*U\*\*\*\*\*/ \*\*32D60\*U\*\*\*\*\*

※ In model name notation, ' \* ' consists of numbers (0 to 9) or alphabets (A to Z).

4. TCO (TCO Certified) is the certification for products with less environmental impact given by TCO, the Swedish confederation of professional employees.

Certification acquisition model: \*\*24D60\*U\*\*\*\*\* / \*\*27D60\*U\*\*\*\*\*/ \*\*32D60\*U\*\*\*\*\*

※ In model name notation, ' \* ' consists of numbers (0 to 9) or alphabets (A to Z).

5. Guidelines and conditions applied to the calculation of carbon emissions

- PAS 2050:2011 – Specification for the assessment of the life cycle greenhouse gas emissions of goods and services
- Product Carbon Footprints : Requirements for Certification v2
- Database : Ecolnvent 3.8, Korea LCI DB

6. Life Cycle Assessment System Boundary

- Production: Pre-manufacturing (parts and materials that make up the product) and assembling the product at Samsung Electronics
- Distribution: Distribution from Vietnam to the Netherlands
- Use: Used for 7 years
- Disposal: Waste disposal of parts and materials

7. Measured based on weight, Environmental Claim Validation (ECV) verification was obtained from UL for recycled materials.

- Verification method: ECV Procedure for Recycled content, UL ECVP 2809-2, Second Edition
- Rear cover : Contains a minimum of 10% recycled content (based on by weight)  
(PCM 5%, ocean-bound PET 5%)
- Stand : Contains a minimum of 35% ABS post consumer recycled material (based on by weight)
- ※ PCM : Post-Consumer Material, Substances recycled from waste products used by consumers
- ※ PET : Poly Ethylene Terephthalate
- ※ PC : PolyCarbonate
- ※ UL : Underwriters Laboratories, Global Environmental Safety Certification Authority
- ※ ECV : Environmental Claim Validation



## Endnotes

8. Samsung Electronics operates a mineral management process based on OECD due diligence guidelines for responsible minerals.

[https://www.samsung.com/global/sustainability/people/supply\\_chain/#anchor\\_4](https://www.samsung.com/global/sustainability/people/supply_chain/#anchor_4)

9. Product Environment Management Substances Operation Rules

<https://www.samsung.com/global/sustainability/digital-library/policy-document/>

10. Details of the conversion of renewable energy

Samsung Electronics joined RE100, a global initiative, to reduce indirect carbon emissions (Scope 2) caused by power use and decided to push for the conversion of renewable energy to used power by 2050. First, Samsung Electronics is pushing to achieve its renewable energy target at all overseas operations by 2027. For our sites in the US, China, and Europe that have already reached this goal, we plan to expand direct power purchase agreements (PPAs) centering on the regions equipped with active renewable energy policies and systems. The DX division is pushing to achieve its renewable energy target by 2027, both at home and abroad.

<https://www.samsung.com/global/sustainability/planet/climate-action/#anchor2>

11. Samsung Electronics adopts global standards such as environmental management (ISO14001) and energy management system (ISO50001), mandates all workplaces to obtain the certification, and recommends partner companies to obtain related international certifications to spread environmental safety management, which is reflected in the comprehensive evaluation of partner companies.

Except for one small production subsidiary in South Africa (SSAP), all of Samsung Electronics' workplaces have obtained the certification as of 2021, and 86% of partners that are subject to comprehensive evaluation.

12. The recycled materials applied to the product packaging materials are as follows.

- Subsidiary Materials Containing 50% Recycled Plastics: Accessories Bag
- Subsidiary Materials Containing 30% Recycled Plastics: Stand Bag

13. Recyclability of paper boxes was increased by removing metal staples and replacing them with glue. The reduction of box assembly process time also reduced energy consumption in the manufacturing process.

14. We plan to reduce power consumption by an avg. of 30% in 2030 compared to the same performance model in 2019 by applying low power technology to representative models of seven major electronic products such as TVs, monitors, smartphones, refrigerators, washing machines, air conditioners, and PCs. We are conducting twice/yearly implementation checks on the annual improvement goals of the representative models for each product line, and we are trying to spread the energy efficiency technology applied to the representative models horizontally to other models.

15. Average power consumption of S32D80\*U is 33.0 W.

Measurement criteria model: LS32D800EAUXEN

Power consumption measurement criteria: Regulation (EU) No 2019/2021 (as amended) and EN 50564:2011

Power consumption is calculated based on the power measured in our laboratory based on the initial shipment status product.

Different countries have different regulatory conditions or measurement standards, and measurement methods may be updated to change measurements when each country's regulatory conditions change.

The model name/model code of the product may vary by region or country where Samsung Electronics sells the product.

16. By applying about 370,000 single-product repairs in 107 countries of about 51 subsidiaries in 2023, we are trying to reduce the burden of repair costs on consumers by reducing about \$61 compared to the previous average repair costs, as well as reducing environmental impact by extending the life of products. (availability may vary by country)

## Endnotes

17. Providing drawings for upcycle packaging

[www.samsung-upcyclepackaging.com](http://www.samsung-upcyclepackaging.com)

---

### **Recycling**

Samsung established waste collection systems in each region as we work tirelessly to enhance the collection and recycling of waste products. We also offer product take-back and recycling services for Samsung products in countries with local take-back legislation. We are always looking to expand to additional locations.

<https://www.samsung.com/global/sustainability/digital-library/policy-document/>

### **Environmental Strategy**

Samsung Electronics announced the New Environmental Strategy in September 2022 with the aim of addressing global environmental issues through our innovative technologies. This paradigm shift is essential for our sustainable growth and will create meaningful momentum to reinforce our competitiveness.

The New Environmental Strategy was developed based on our commitment to achieve net zero by 2050, joining the world's effort to combat climate change, maximize resource circularity to advance towards a circular economy, and continuously address environmental challenges with technological innovation. This effort is expected to bring positive change to the broader ecosystem of the ICT industry as we engage in the manufacturing and supply of an extensive range of products and services.

### **Corporate Sustainability Management**

Samsung is constantly striving to deliver innovative products and services across the value chain. This is rooted in our core values in economy, society and environment. Therefore, we monitor the financial and non-financial impacts that we exert on society in order to maximize our positive impacts while minimizing any negative ones.

<https://www.samsung.com/global/sustainability/main/>

# Appendix [A] Carbon Reduction Certificate (1/3)

Seite Page 1 / 3

## Zertifikat *Certificate*

Zertifikatsnummer *Certificate No.:*

Q 50623534 0001

Berichtsnummer *Report No.:*

CN242GY4 001

Genehmigungsinhaber *License Holder:*

Samsung Electronics  
Co., Ltd.  
129, Samsung-ro, Yeongtong-gu,  
Suwon-si, Gyeonggi-do 16677  
Republic of Korea

Fertigungsstätte *Manufacturing Site:*

3 Fertigungsstätten auf Folgeseiten  
*Listing of 3 factories on following pages*

Prüfzeichen *Test Mark:*Geprüft nach *Tested according to:*

2 PFG Q2880/09.23  
ISO 14067:2018

Geräteidentifikation

*Product Identification*

Produkt:

Display Unit  
(QHD Monitor)

*Product:*

Modell:

Modelle sind auf nächste(r) Seite(n) gelistet

*Type:**Type designation(s) are listed on the next page(s)*

Technische Daten:

Trademark : SAMSUNG

*Technical Data:*

Key information:

1. Functional unit/Declared unit: using one monitor produced for 4 years
2. Life cycle boundary: Cradle-to-grave
3. PCF software and database: Refer to the test report
4. Evaluation time span: 2022.10.01 - 2023.09.30
5. Previous year product carbon footprint CO2e: Refer to the test report
6. Current year product carbon footprint CO2e: Refer to the test report

Gültig bis:

2026-03-21

*Date of expiry:*

Gültig ab:

2024-03-22

*Valid from:*

Zertifizierungsstelle:

*Certification body:*

Ausstellungsdatum:

2024-03-22

*Date of issue:*

Yonggang Li

Dem Zertifikat liegt unsere Prüf- und Zertifizierungsordnung zugrunde.  
Das Produkt entspricht den o.g. Anforderungen, die Herstellung wird überwacht.  
*This certificate is based on our Testing and Certification Regulation. The product fulfills above mentioned requirements, the production is subject to surveillance.*

TÜV Rheinland LGA Products GmbH, Tillystraße 2, 90431 Nürnberg

<http://www.tuv.com/safety> E-mail: [markcheck@tuv.com](mailto:markcheck@tuv.com)

Fax: +49 221 806-3935

[www.tuv.com](http://www.tuv.com)

 **TÜVRheinland®**  
Precisely Right.

# Appendix [A] Carbon Reduction Certificate (2/3)

Seite Page 2 / 3

## Zertifikat *Certificate*

**Zertifikatsnummer** *Certificate No.:*

Q 50623534 0001

**Berichtsnummer** *Report No.:*

CN242GY4 001

**Produkt** *Product:*Display Unit  
(QHD Monitor)**Modell** *Type:***Bezeichnung** *Designation:*

- 1) QHD Monitor Viewfinity S60UA 27 inch
- 2) QHD Monitor Viewfinity S60UA 32 inch
- 3) QHD Monitor Viewfinity S60UD 27 inch
- 4) QHD Monitor Viewfinity S60UD 32 inch



© TÜV, TÜV and TÜV are registered trademarks. Utilization and application requires prior approval.



**Appendix [A] Carbon Reduction Certificate (3/3)**

Seite Page 3 / 3

# Zertifikat *Certificate*

**Zertifikatsnummer** *Certificate No.:*  
Q 50623534 0001**Berichtsnummer** *Report No.:*  
CN242GY4 001**Produkt** *Product:*  
Display Unit (QHD Monitor)**Fertigungsstätten** *Factories:*

- 
- 1 SAMSUNG MEXICANA, S.A. DE C.V.  
BLVD. LOS OLIVOS #11110,  
PARQUE INDUSTRIAL  
EL FLORIDO, 2DA. SECCION,  
22244 TIJUANA, Baja California,  
MEXICO
  - 2 SAMSUNG ELECTRONICS HCMC CE  
COMPLEX CO., LTD  
Lot I-11, D2 Road,  
Saigon Hi-tech Park,  
Tang Nhon Phu B Ward,  
Thu Duc City, Ho Chi Minh City 70000,  
Vietnam
  - 3 SAMSUNG ELECTRONICS EGYPT S.A.E (SEEG)  
Piece No.98, Engineering Sector,  
Kom Abu Radi Industrial Zone,  
62815 Al Wasta, Beni Suef  
Egypt



® TÜV, TUEV and TUV are registered trademarks. Utilization and application requires prior approval.

**Appendix [B] Review of Product Carbon Footprint Method (1/1)**

# CERTIFICATE

Certificate-ID: C01-2023-12-21260216

Certificate for: **Review of Product Carbon Footprint Method of Samsung Electronics Co., Ltd.****SAMSUNG**Certified: Samsung Electronics Co., Ltd.  
129 Samsung-Ro, Yeoungtong-Gu, Suwon-Si, Gyeonggi-Do, Korea

Accounting scope: Methodology for assessing the potential climate change impacts of Samsung electronic products

Applied Standard: ISO 14067: 2018

Review Report: ADTR-PCF-0027

Valid until: December 31<sup>st</sup> 2024

Based on the standard ISO 14067: 2018 the reviewer concludes that the PCF Methodology developed by Samsung Electronics Co., Ltd. is scientifically based and reflects the state of the art. The approach and principles behind the methodology are generally appropriate for the assessment of potential Climate Change impacts of the considered electronic products. Furthermore the data used are appropriate for the goal and scope of the method. Necessary recommendations for the documentation and calculation tool were discussed and implemented by Samsung Electronics Co., Ltd.. For the future, TÜV Rheinland recommends to continually enhance the methodology in line with the developments in science, technology and corresponding industry and to adapt the methodology report accordingly. Specifications and assessment limits can be found in the review report. The validity can be authenticated using the QR code, or the test mark ID at [www.certipedia.com](http://www.certipedia.com).

Cologne, December 13, 2023

*Ran Tao*

Ran Tao  
TÜV Rheinland Group  
Sustainability and Carbon Services

*S. Jorje*

Susanne Jorje



Product Carbon  
Footprint  
Certified Calculation  
Method



www.tuv.com  
ID: 0000095903

**TÜV Rheinland®**  
Precisely Right.



**Appendix [B] Review of Product Carbon Footprint (1/3)**

Seite Page 1 / 3

# Zertifikat *Certificate*

**Zertifikatsnummer** *Certificate No.:*

Q 50623512 0001

**Berichtsnummer** *Report No.:*

CN24S6WC 001

**Genehmigungsinhaber** *License Holder:*

Samsung Electronics  
Co., Ltd.  
129, Samsung-ro, Yeongtong-gu,  
Suwon-si, Gyeonggi-do 16677  
Republic of Korea

**Fertigungsstätte** *Manufacturing Site:*

3 Fertigungsstätten auf Folgeseiten  
*Listing of 3 factories on following pages*

**Prüfzeichen** *Test Mark:*

Product Carbon  
Footprint

www.tuv.com  
ID 1111282638

**Geprüft nach** *Tested according to:*

ISO 14067:2018

**Geräteidentifikation***Product Identification***Produkt:***Product:*

Display Unit  
(QHD Monitor)

**Modell:***Type:*

Modelle sind auf nächste(r) Seite(n) gelistet  
*Type designation(s) are listed on the next page(s)*

**Technische Daten:***Technical Data:*

Trademark : SAMSUNG  
Ratings : Refer to test report CN24S6WC 001 for details.  
Remark : This certificate and the CO<sub>2</sub>e emission value  
from the attached report should not be used  
for carbon reduction declaration purpose.  
Refer to test report CN24S6WC 001 for details.

**Gültig bis:***Date of expiry:*

2026-03-21

**Gültig ab:***Valid from:*

2024-03-22

**Ausstellungsdatum:***Date of issue:*

2024-03-22

**Zertifizierungsstelle:***Certification body:*

Yonggang Li



Dem Zertifikat liegt unsere Prüf- und Zertifizierungsordnung zugrunde.  
Das Produkt entspricht den o.g. Anforderungen, die Herstellung wird überwacht.  
*This certificate is based on our Testing and Certification Regulation. The product  
fulfills above mentioned requirements, the production is subject to surveillance.*

**TÜV Rheinland LGA Products GmbH, Tillystraße 2, 90431 Nürnberg**

<http://www.tuv.com/safety> E-mail: [markcheck@tuv.com](mailto:markcheck@tuv.com)

Fax: +49 221 806-3935

[www.tuv.com](http://www.tuv.com)

**TÜVRheinland®**  
Precisely Right.

**Appendix** [B] Review of Product Carbon Footprint (2/3)

Seite Page 2 / 3

# Zertifikat *Certificate*

**Zertifikatsnummer** *Certificate No.:*

Q 50623512 0001

**Berichtsnummer** *Report No.:*

CN24S6WC 001

**Produkt** *Product:*Display Unit  
(QHD Monitor)**Modell** *Type:***Bezeichnung** *Designation:*

- 1) QHD Monitor Viewfinity S60UD 24 inch
- 2) QHD Monitor Viewfinity S60UA 27 inch
- 3) QHD Monitor Viewfinity S60UA 32 inch
- 4) QHD Monitor Viewfinity S60UD 27 inch
- 5) QHD Monitor Viewfinity S60UD 32 inch



© TÜV, TÜV and TÜV are registered trademarks. Utilization and application requires prior approval.



**Appendix [B] Review of Product Carbon Footprint (3/3)**

Seite Page 3 / 3

# Zertifikat *Certificate*

**Zertifikatsnummer** *Certificate No.:*  
Q 50623512 0001**Berichtsnummer** *Report No.:*  
CN24S6WC 001**Produkt** *Product:*  
Display Unit (QHD Monitor)**Fertigungsstätten** *Factories:*

- 1 SAMSUNG MEXICANA, S.A. DE C.V.  
BLVD. LOS OLIVOS #11110,  
PARQUE INDUSTRIAL  
EL FLORIDO, 2DA. SECCION,  
22244 TIJUANA, Baja California,  
MEXICO
- 2 SAMSUNG ELECTRONICS HCMC CE  
COMPLEX CO., LTD  
Lot I-11, D2 Road,  
Saigon Hi-tech Park,  
Tang Nhon Phu B Ward,  
Thu Duc City, Ho Chi Minh City 70000,  
Vietnam
- 3 SAMSUNG ELECTRONICS EGYPT S.A.E (SEEG)  
Piece No.98, Engineering Sector,  
Kom Abu Radi Industrial Zone,  
62815 Al Wasta, Beni Suef  
Egypt

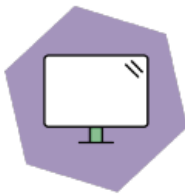


© TÜV. TÜV and TÜV are registered trademarks. Utilisation n and application requires prior approval.

**Appendix** [C] TCO Certificate (1/9)

# CERTIFICATE

## TCO Certified, generation 9 for displays



**Brand name:** Samsung  
**Model name:** S24D600UAL

**Certification date:** 2024-03-27  
**Expiry date:** 2026-03-27

**Toward sustainable IT products**

TCO Certified is the world-leading sustainability certification for IT products. It is an easy-to-use tool that helps you get environmental and social sustainability right. Criteria are mandatory, tough, and apply globally. Compliance is always independently verified.

For more information, visit [tcocertified.com](https://tcocertified.com).

**No. D924030618**

**Emma Hagrot**  
Certification process  
TCO Development

This certificate confirms that a sample of the certified product, as stated herein, has been tested and approved as to its compliance with the criteria document valid at the time of the laboratory test. The certified product may, subject to the use of the unique combination of brand name, type/model name and sales name as stated in this certificate, be marked and sold with the TCO Certified label in accordance with the agreement.

**Appendix [C] TCO Certificate (2/9)****Appendix to certificate No. D924030618**

Brand name: Samsung

Model name(s):  
S24D600UAL

Separate power supply: No



**17%**  
Recycled plastic



**5.3 kg**  
Total weight of product



Energy consumption  
On mode: 19.4 Watt  
Sleep mode: 0.3 Watt  
Off mode: 0.2 Watt



Aspect ratio: 16:9  
Panel size: 23.8 in  
Min. resolution width: 2560 px  
Min. resolution height: 1440 px  
Type of stand: Pivot

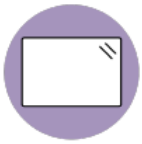
**Sales name(s):**

S24D600UAN, S24D600UAU, S24D602UAN, S24D604UAA, S24D604UAC, S24D604UAE, S24D604UAN,  
S24D604UAW, S24D606UAN

**Model name type key(s)**

1st \*: N/A  
2nd \*: N/A

Emma Hagrot  
Certification process  
TCO Development

**Appendix** [C] TCO Certificate (3/9)**Appendix to certificate No. D924030618****Panels:**

SAMSUNG CY-MD238KGHV1H

A blue ink signature that reads 'Emma Hagrot'.

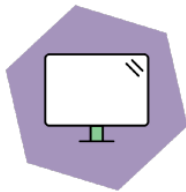
**Emma Hagrot**  
Certification process  
TCO Development



**Appendix** [C] TCO Certificate (4/9)

# CERTIFICATE

## TCO Certified, generation 9 for displays



**Brand name:** Samsung  
**Model name:** S27D600UAK

**Certification date:** 2024-03-24  
**Expiry date:** 2026-03-24

**Toward sustainable IT products**

TCO Certified is the world-leading sustainability certification for IT products. It is an easy-to-use tool that helps you get environmental and social sustainability right. Criteria are mandatory, tough, and apply globally. Compliance is always independently verified.

For more information, visit [tcocertified.com](https://tcocertified.com).

**No. D924030615**

**Emma Hagrot**  
Certification process  
TCO Development

This certificate confirms that a sample of the certified product, as stated herein, has been tested and approved as to its compliance with the criteria document valid at the time of the laboratory test. The certified product may, subject to the use of the unique combination of brand name, type/model name and sales name as stated in this certificate, be marked and sold with the TCO Certified label in accordance with the agreement.

**Appendix [C] TCO Certificate (5/9)****Appendix to certificate No. D924030615**

**Brand name:** Samsung

**Model name(s):**

S27D600UAK

**Separate power supply:** No



**16%**

**Recycled plastic**



**6.1 kg**

**Total weight of product**



**Energy consumption**

**On mode:** 20.2 Watt

**Sleep mode:** 0.3 Watt

**Off mode:** 0.2 Watt



**Aspect ratio:** 16:9

**Panel size:** 27 in

**Min. resolution width:** 2560 px

**Min. resolution height:** 1440 px

**Type of stand:** Pivot

**Sales name(s):**

S27D600UAL, S27D600UAN, S27D600UAU, S27D602UAC, S27D602UAN, S27D604UAA, S27D604UAE, S27D604UAI, S27D604UAK, S27D604UAN, S27D604UAW, S27D606UAC, S27D606UAN

**Model name type key(s)**

**1st \* :** N/A

**2nd \* :** N/A

A handwritten signature in blue ink.

**Emma Hagrot**  
Certification process  
TCO Development

**Appendix** [C] TCO Certificate (6/9)**Appendix to certificate No. D924030615****Panels:**

SAMSUNG CY-MD270KGAV1H

A handwritten signature in blue ink, appearing to read 'Emma Hagrot'.

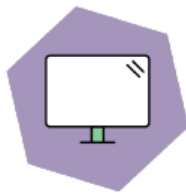
**Emma Hagrot**  
Certification process  
TCO Development

## Appendix [C] TCO Certificate (7/9)



# CERTIFICATE

## TCO Certified, generation 9 for displays



**Brand name:** Samsung  
**Model name:** S32D600UAK

**Certification date:** 2024-03-24  
**Expiry date:** 2026-03-24

### Toward sustainable IT products

TCO Certified is the world-leading sustainability certification for IT products. It is an easy-to-use tool that helps you get environmental and social sustainability right. Criteria are mandatory, tough, and apply globally. Compliance is always independently verified.

For more information, visit [tcocertified.com](https://tcocertified.com).

**No. D924030612**

**Emma Hagrot**  
Certification process  
TCO Development

This certificate confirms that a sample of the certified product, as stated herein, has been tested and approved as to its compliance with the criteria document valid at the time of the laboratory test. The certified product may, subject to the use of the unique combination of brand name, type/model name and sales name as stated in this certificate, be marked and sold with the TCO Certified label in accordance with the agreement.

**Appendix [C] TCO Certificate (8/9)****Appendix to certificate No. D924030612**

**Brand name:** Samsung

**Model name(s):**  
S32D600UAK

**Separate power supply:** No



**15%**  
**Recycled plastic**



**7.1 kg**  
**Total weight of product**

**Energy consumption**

**On mode:** 24.0 Watt

**Sleep mode:** 0.3 Watt

**Off mode:** 0.2 Watt



**Aspect ratio:** 16:9

**Panel size:** 31.5 in

**Min. resolution width:** 2560 px

**Min. resolution height:** 1440 px

**Type of stand:** Pivot

**Sales name(s):**

S32D600UAL, S32D600UAN, S32D600UAU, S32D602UAC, S32D602UAN, S32D604UAE, S32D604UAI, S32D604UAK, S32D604UAM, S32D604UAN, S32D604UAW, S32D606UAC, S32D606UAN

**Model name type key(s)**

**1st \* :** N/A

**2nd \* :** N/A

**Emma Hagrot**  
Certification process  
TCO Development

**Appendix** [C] TCO Certificate (9/9)**Appendix to certificate No. D924030612****Panels:**

SAMSUNG CY-MD315KGEV1H

A blue ink signature that reads 'Emma Hagrot'.

**Emma Hagrot**  
Certification process  
TCO Development



**Appendix [D] REACH Certificate(1/3)****SAMSUNG**

Samsung Electronics Co., Ltd  
129, Samsung-ro, Yeongtong-gu,  
Suwon-si, Gyeonggi-do, Korea

**Declaration of REACH Substances of Very High Concern (SVHCs) Disclosure****Model: LS24D600UAUXEN**

Dear Customer:

The European Regulation 1907/2006 on the *Registration, Evaluation, Authorization, and Restriction of Chemicals* (REACH) entered into force on 1<sup>st</sup> June, 2007.<sup>1</sup>

Article 33 of REACH requires suppliers to inform recipients and respond to consumer enquiries if an article contains more than 0.1% (by weight per article) of any substance on the candidate list of Substances of Very High Concern (SVHC).<sup>2</sup>

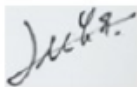
Samsung Electronics Co. Ltd (the "SEC") hereby declares the presence of substances on the SVHC candidate list which are contained in a quantity of more than 0.1% (w/w) in the above product and / or its packaging<sup>3</sup> placed on the European Community market by the SEC and its subsidiaries.

The substances on the REACH SVHC candidate list in concentrations greater than 0.1% by weight per article are listed below.

Substance name	CAS No.	Application
Lead	7439-92-1	ASSY ACCESSORY MANUAL ASSY PCB MAIN
Lead monoxide (lead oxide)	1317-36-8	ASSY PCB MAIN
Melamine	108-78-1	ASSY BACK LIGHT UNIT

**Signature:**

YongSup LEE

**Date:** 2024-03-29

Global Customer Satisfaction Team

Name : YONGSUP LEE

Job position/Title : Product Quality Group

<sup>1</sup> <http://eur-lex.europa.eu/LexUriServ/LexUriServ.do?uri=OJ:L:2006:396:0001:0849:EN:PDF>

<sup>2</sup> SVHC = Substances of Very High Concern. Considered as candidates for inclusion in Annex XIV of REACH.

The latest revision to the candidate list was published by the European Chemicals Agency on 17<sup>th</sup> January 2022 at: <https://echa.europa.eu/candidate-list-table>

<sup>3</sup> Reference: ECHA Guidance on requirements for substances in Articles.

**Appendix [D] REACH Certificate(2/3)****SAMSUNG**

Samsung Electronics Co., Ltd  
129, Samsung-ro, Yeongtong-gu,  
Suwon-si, Gyeonggi-do, Korea

**Declaration of REACH Substances of Very High Concern (SVHCs) Disclosure****Model: LS27D600UAUXEN**

Dear Customer:

The European Regulation 1907/2006 on the *Registration, Evaluation, Authorization, and Restriction of Chemicals* (REACH) entered into force on 1<sup>st</sup> June, 2007.<sup>1</sup>

Article 33 of REACH requires suppliers to inform recipients and respond to consumer enquiries if an article contains more than 0.1% (by weight per article) of any substance on the candidate list of Substances of Very High Concern (SVHC).<sup>2</sup>

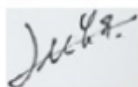
Samsung Electronics Co. Ltd (the "SEC") hereby declares the presence of substances on the SVHC candidate list which are contained in a quantity of more than 0.1% (w/w) in the above product and / or its packaging<sup>3</sup> placed on the European Community market by the SEC and its subsidiaries.

The substances on the REACH SVHC candidate list in concentrations greater than 0.1% by weight per article are listed below.

Substance name	CAS No.	Application
Lead	7439-92-1	ASSY ACCESSORY MANUAL ASSY PCB MAIN
Lead monoxide (lead oxide)	1317-36-8	ASSY PCB MAIN
Melamine	108-78-1	ASSY BACK LIGHT UNIT

**Signature:**

YongSup LEE

**Date:** 2024-03-29

Global Customer Satisfaction Team

Name : YONGSUP LEE

Job position/Title : Product Quality Group

<sup>1</sup> <http://eur-lex.europa.eu/LexUriServ/LexUriServ.do?uri=OJ:L:2006:396:0001:0849:EN:PDF>

<sup>2</sup> SVHC = Substances of Very High Concern. Considered as candidates for inclusion in Annex XIV of REACH. The latest revision to the candidate list was published by the European Chemicals Agency on 17<sup>th</sup> January 2022 at: <https://echa.europa.eu/candidate-list-table>

<sup>3</sup> Reference: ECHA Guidance on requirements for substances in Articles.

**Appendix [D] REACH Certificate(3/3)****SAMSUNG**

Samsung Electronics Co., Ltd  
129, Samsung-ro, Yeongtong-gu,  
Suwon-si, Gyeonggi-do, Korea

**Declaration of REACH Substances of Very High Concern (SVHCs) Disclosure****Model: LS32D600UAUXEN**

Dear Customer:

The European Regulation 1907/2006 on the *Registration, Evaluation, Authorization, and Restriction of Chemicals* (REACH) entered into force on 1<sup>st</sup> June, 2007.<sup>1</sup>

Article 33 of REACH requires suppliers to inform recipients and respond to consumer enquiries if an article contains more than 0.1% (by weight per article) of any substance on the candidate list of Substances of Very High Concern (SVHC).<sup>2</sup>

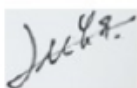
Samsung Electronics Co. Ltd (the "SEC") hereby declares the presence of substances on the SVHC candidate list which are contained in a quantity of more than 0.1% (w/w) in the above product and / or its packaging<sup>3</sup> placed on the European Community market by the SEC and its subsidiaries.

The substances on the REACH SVHC candidate list in concentrations greater than 0.1% by weight per article are listed below.

Substance name	CAS No.	Application
Lead	7439-92-1	ASSY ACCESSORY MANUAL ASSY PCB MAIN
Lead monoxide (lead oxide)	1317-36-8	ASSY PCB MAIN
Boric acid	10043-35-3	ASSY OPEN CELL
Melamine	108-78-1	ASSY BACK LIGHT UNIT

**Signature:**

YongSup LEE


**Date:** 2024-03-29

Global Customer Satisfaction Team

Name : YONGSUP LEE

Job position/Title : Product Quality Group

<sup>1</sup> <http://eur-lex.europa.eu/LexUriServ/LexUriServ.do?uri=OJ:L:2006:396:0001:0849:EN:PDF>

<sup>2</sup> SVHC = Substances of Very High Concern. Considered as candidates for inclusion in Annex XIV of REACH.

The latest revision to the candidate list was published by the European Chemicals Agency on 17<sup>th</sup> January 2022 at: <https://echa.europa.eu/candidate-list-table>

<sup>3</sup> Reference: ECHA Guidance on requirements for substances in Articles.